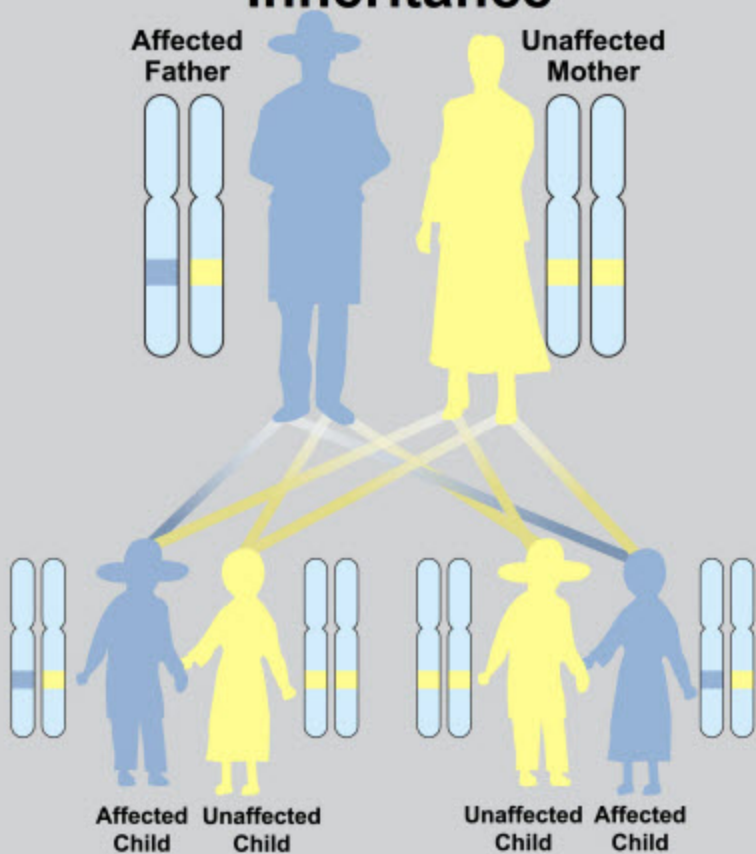


# Autosomal Dominant Inheritance



Autosomal Dominant disorders require only one mutation for the disease to be expressed. Only one parent, who is affected with the single mutation, is required to pass on the disorder. Since he or she had two chromosomes, only one of which has the mutant gene, parents can expect that half (50%) of their children will receive that one and inherit the disease. There are no carriers in autosomal dominant disease but it is common for individuals that inherit the mutation to not show the disease (non-penetrance). Dominant disorders often result from new mutations and many times there are no other affected family members.